

REVIEW & PRINCIPLES

February 7, 2021
Spiritual Discussions



TWO WRITERS



Dr. Jim Wilder

- grew up in villages tucked into the Andes mountains of Colombia
- Ph.D. in psychology and M.A. in theology



Michael Hendricks

- Author, engineer, inventor and frustrated pastor
- interested in bringing the transformation of character back into the center of things.



TWO WRITERS



Dr. Jim Wilder

- grew up in villages tucked into the Andes mountains of Colombia
- Ph.D. in psychology and M.A. in theology



Michael Hendricks

- Author, engineer, inventor and frustrated pastor
- interested in bringing the transformation of character back into the center of things.



TABLE OF CONTENTS

- Half-Brained Christianity
- How Do People Grow? (what type of soil)
- Joy: The Face of Jesus that Transforms
- *Hesed*: Our Relational Glue
- Group Identity: What Kind of People Are We?
- Healthy Correction: Stop Being So Nice
- Narcissism: The Relational Infection
- A Full-Brained Christianity

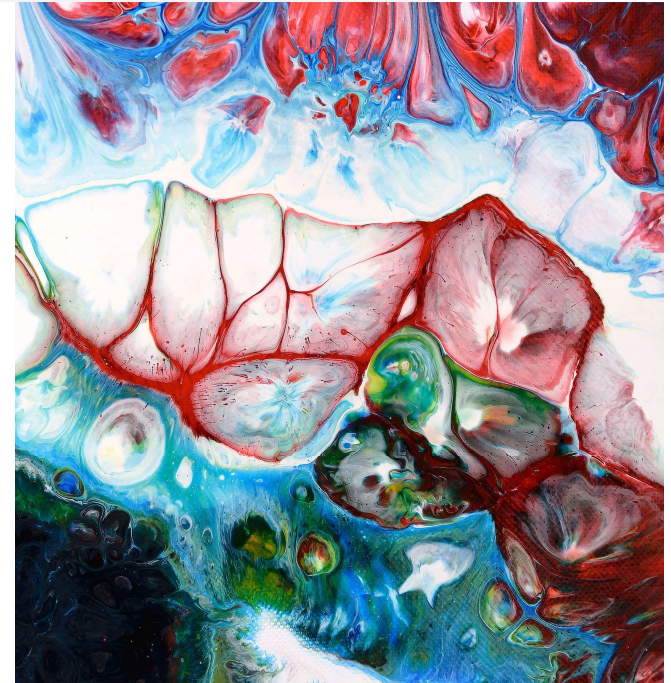


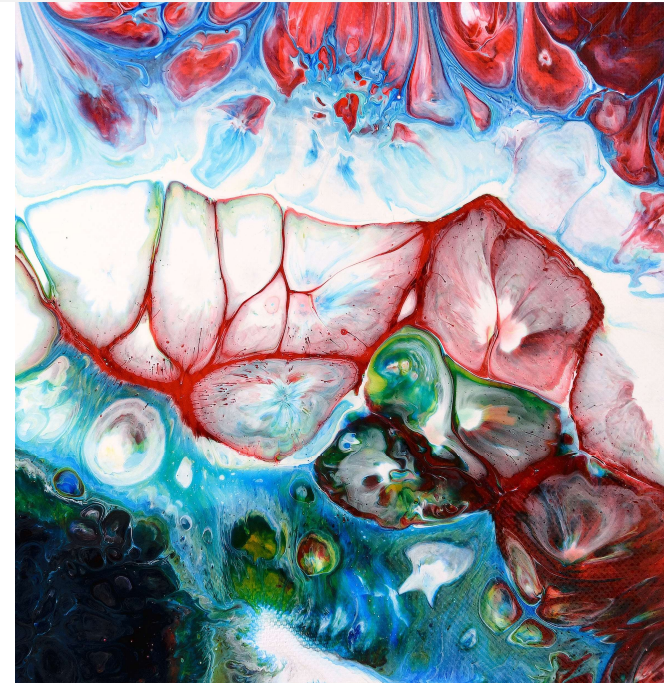
TABLE OF CONTENTS

- Half-Brained Christianity
- How Do People Grow? (what type of soil)
- Joy: The Face of Jesus that Transforms
- *Hesed*: Our Relational Glue
- Group Identity: What Kind of People Are We?
- Healthy Correction: Stop Being So Nice
- Narcissism: The Relational Infection
- A Full-Brained Christianity



APPENDIX

- Soil Assessment Questions
- Joy On Demand Exercise
- Pseudo-Joy Checklist
- Enemy Mode Checklist
- Maturity Stages



BRAIN HALVES

Taking Sides

Left

Computational

Logical

Verbal

Analytical

Language

Sequential

Linear

Factual

Runs at 4-5 cycles/second



Right

Creative, artistic

Imaginative

Non-verbal

Emotional

Visual

Intuitive

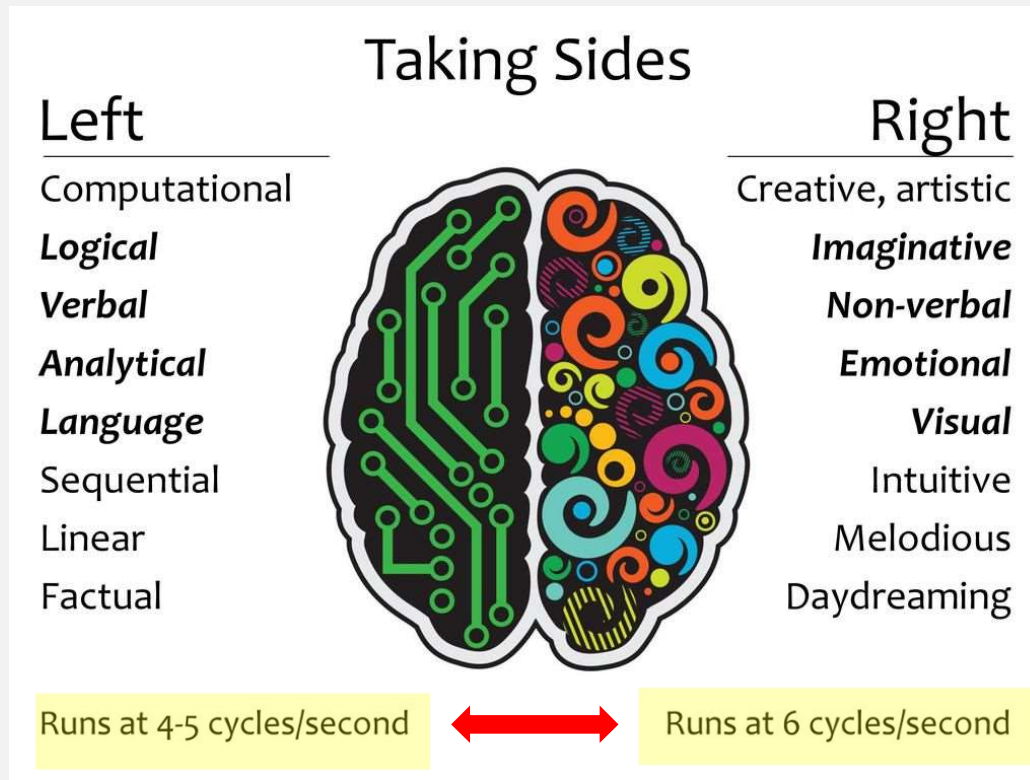
Melodious

Daydreaming

Runs at 6 cycles/second



BRAIN HALVES



BRAIN HALVES

Taking Sides

Left

Computational
Logical
Verbal
Analytical
Language
 Sequential
 Linear
 Factual



Right

Creative, artistic
Imaginative
Non-verbal
Emotional
Visual
 Intuitive
 Melodious
 Daydreaming

Runs at 4-5 cycles/second



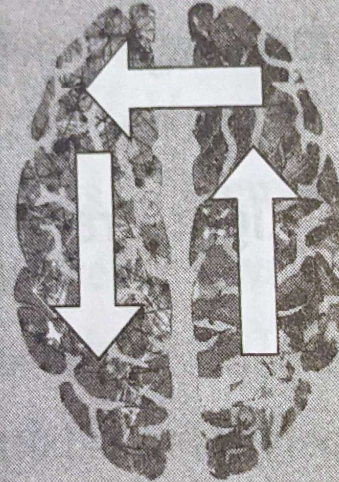
Runs at 6 cycles/second

LEFT (SLOW TRACK)

Conscious thought
 Speech
 Strategies
 Problem solving
 Logic
 Stories

RIGHT (FAST TRACK)

Individual identity
 Group identity
 Emotional attunement to others
 Assessment of surroundings (good, bad, scary)
 Relational attachments



BRAIN HALVES

Taking Sides

Left

Computational
Logical
Verbal
Analytical
Language
Sequential
Linear
Factual



Right

Creative, artistic
Imaginative
Non-verbal
Emotional
Visual
Intuitive
Melodious
Daydreaming

Runs at 4-5 cycles/second



Runs at 6 cycles/second

LEFT (SLOW TRACK)		RIGHT (FAST TRACK)
Conscious thought		Individual identity
Speech		Group identity
Strategies		Emotional attunement to others
Problem solving		Assessment of surroundings (good, bad, scary)
Logic		Relational attachments
Stories		

- The Right side manages our emotional & relational attachments (w/o us having to 'think' about it)!!
- “Character formation (aka ‘maturity’), ***which is a primary responsibility of the church***, is governed by the right brain, not the left brain” (pg. 22)
- What kind of people are we (Chap 5)



JOHN 14:23

Jesus replied, “Anyone who loves me will obey my teaching. My Father will love them, and we will come to them and make our home with them.”

A left-brain view of Jesus’ teaching would conclude that we need to choose to obey, and this will prove that we love Him.



JOHN 14:23

Jesus replied, “Anyone who loves me will obey my teaching. My Father will love them, and we will come to them and make our home with them.

A left-brain view of Jesus’ teaching would conclude that we need to choose to obey, and this will prove that we love Him.

This is exactly backwards!

Love is the first step – if we love; we will obey



JOHN 14:23

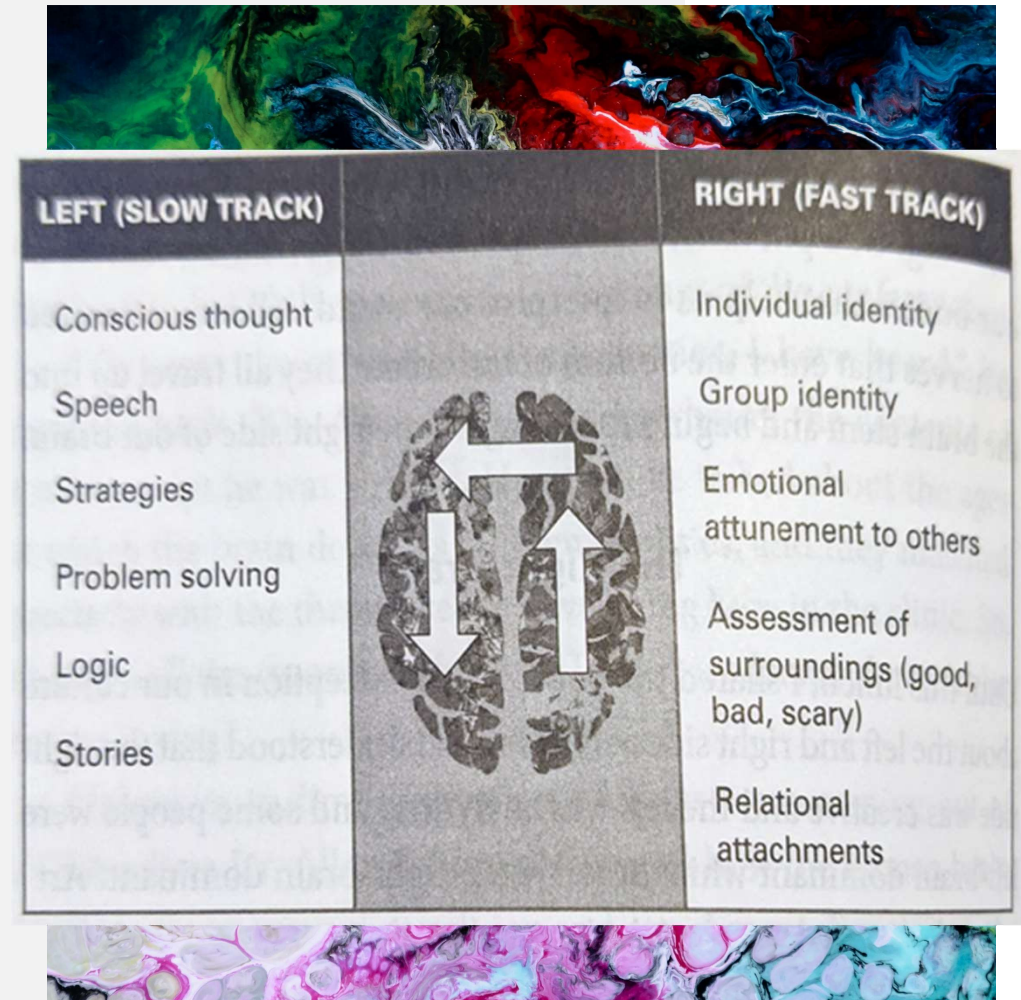
Jesus replied, “Anyone who loves me will obey my teaching. My Father will love them, and we will come to them and make our home with them.

A left-brain view of Jesus’ teaching would conclude that we need to choose to obey, and this will prove that we love Him.

This is exactly backwards!

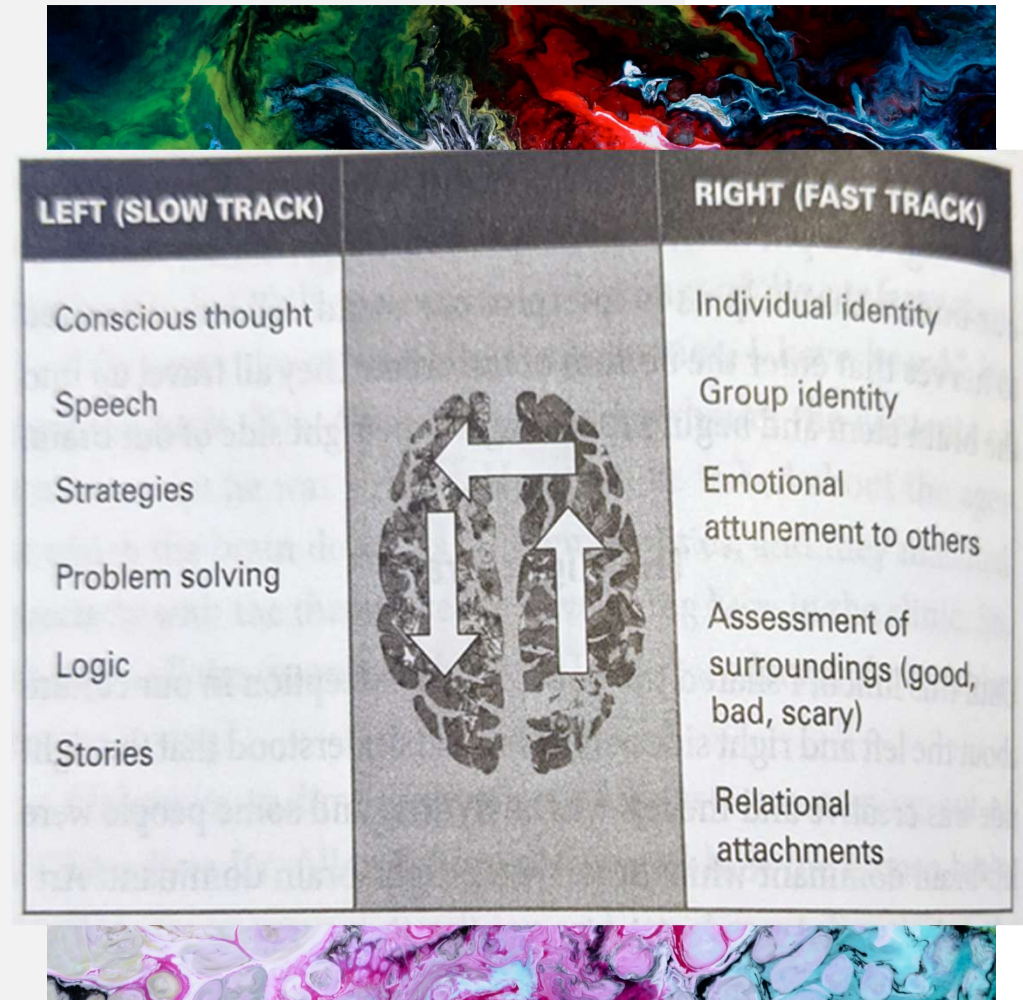
Love is the first step – if we love; we will obey

Focus on relationship (right brain - relations)
– everything else will follow



RIGHT-BRAIN OBSTACLES

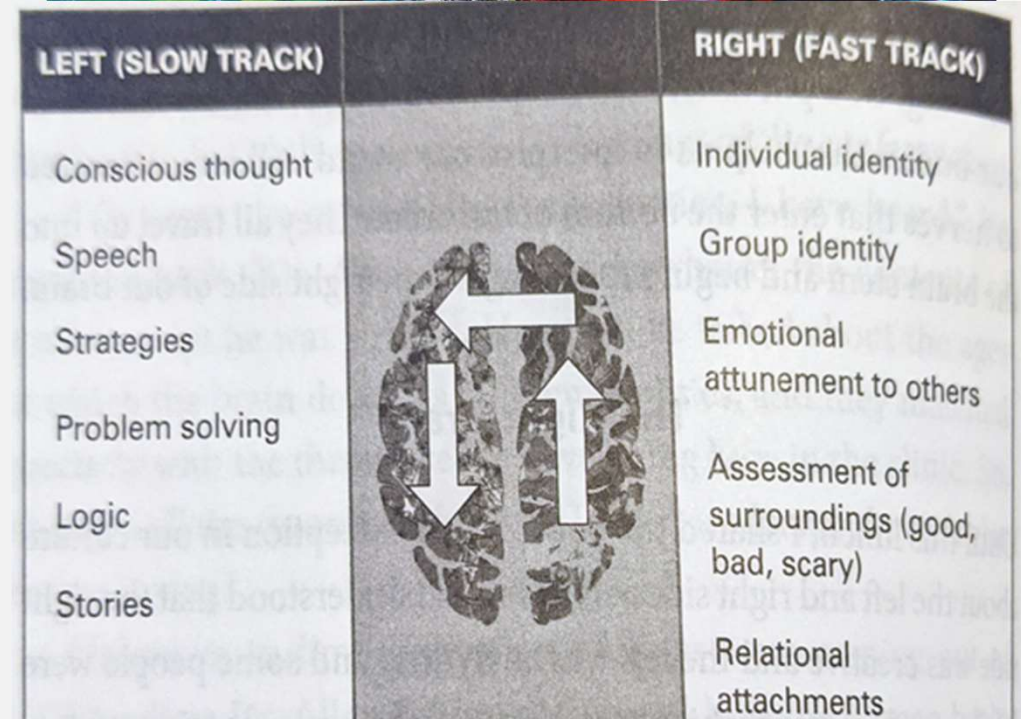
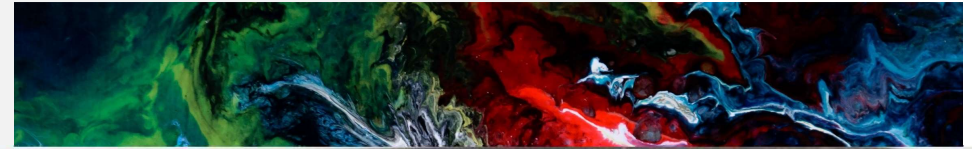
- Low joy
- Isolation
- A lack of loving community
- Poor identity formation
- Unhealed trauma



RIGHT-BRAIN OBSTACLES

- Low joy
- Isolation
- A lack of loving community
- Poor identity formation
- Unhealed trauma

Relational environment
required for training to work



FUN QUOTES

- Along with the Apostle's doctrine, we need the Apostle's character. (117)
- Character is a collection of observed responses to various life situations that is quickly filtered through the options that my people value. (130)



FUN QUOTES

- Along with the Apostle's doctrine, we need the Apostle's character. (117)
- Character is a collection of observed responses to various life situations that is quickly filtered through the options that my people value. (130)
- Two types of shame: toxic & healthy (131)



FUN QUOTES

- Along with the Apostle's doctrine, we need the Apostle's character. (117)
- Character is a collection of observed responses to various life situations that is quickly filtered through the options that my people value. (130)
- Two types of shame: toxic & healthy (131)
- It gets to the center of the dysfunction: Ministry becomes more important than relationships (164)



FUN QUOTES

- Along with the Apostle's doctrine, we need the Apostle's character. (117)
- Character is a collection of observed responses to various life situations that is quickly filtered through the options that my people value. (130)
- Two types of shame: toxic & healthy (131)
- It gets to the center of the dysfunction: Ministry becomes more important than relationships (164)
- There are two types of 'Enemy Mode': Simple Enemy Mode and Predatory Enemy Mode (173)



FUN QUOTES

- Full-Brained Ministry:
 - Full use of truth and relationships. Half-brained Christianity parks on the truth and leaves the relational soil untended (181)
 - Take training seriously (187)
 - Maintains a high-joy environment with lots of play, freedom, creativity, and the safety to fail. Mature leadership creates and maintains this environment (197)



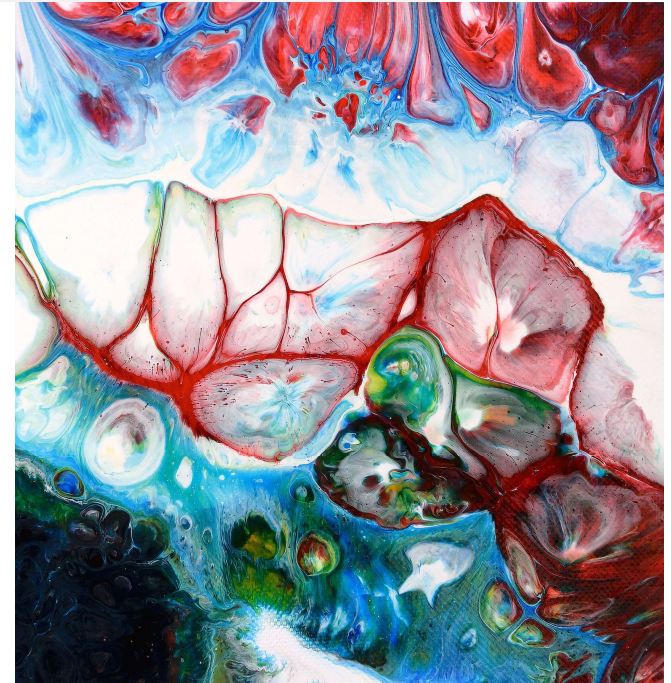
FUN QUOTES

- Full-Brained Ministry:
 - Full use of truth and relationships. Half-brained Christianity parks on the truth and leaves the relational soil untended (181)
 - Take training seriously (187)
 - Maintains a high-joy environment with lots of play, freedom, creativity, and the safety to fail. Mature leadership creates and maintains this environment (197)
- All the healing in the world will not make a person mature (199)



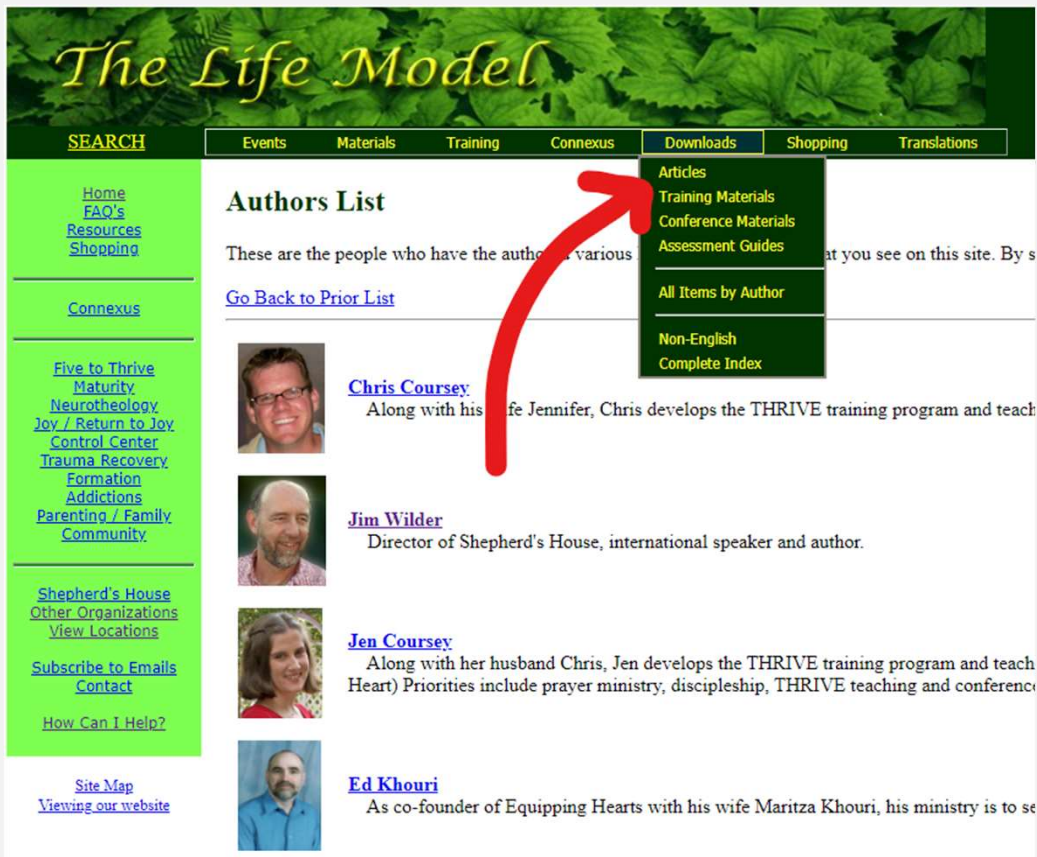
TABLE OF CONTENTS

- Half-Brained Christianity
- How Do People Grow? (what type of soil)
- Joy: The Face of Jesus that Transforms
- *Hesed*: Our Relational Glue
- Group Identity: What Kind of People Are We?
- Healthy Correction: Stop Being So Nice
- Narcissism: The Relational Infection
- A Full-Brained Christianity



Online Follow-up and More Info

https://www.lifemodel.org/list.php?list=m_authors



The Life Model

SEARCH | Events | Materials | Training | Connexus | Downloads | Shopping | Translations

[Home](#)
[FAQ's](#)
[Resources](#)
[Shopping](#)

[Connexus](#)

[Five to Thrive](#)
[Maturity](#)
[Neurotheology](#)
[Joy / Return to Joy](#)
[Control Center](#)
[Trauma Recovery](#)
[Formation](#)
[Addictions](#)
[Parenting / Family](#)
[Community](#)

[Shepherd's House](#)
[Other Organizations](#)
[View Locations](#)

[Subscribe to Emails](#)
[Contact](#)

[How Can I Help?](#)

[Site Map](#)
[Viewing our website](#)

Authors List

These are the people who have the authored various materials that you see on this site. By s

[Go Back to Prior List](#)

Chris Coursey
Along with his wife Jennifer, Chris develops the THRIVE training program and teach

Jim Wilder
Director of Shepherd's House, international speaker and author.

Jen Coursey
Along with her husband Chris, Jen develops the THRIVE training program and teach (Heart) Priorities include prayer ministry, discipleship, THRIVE teaching and conference

Ed Khouri
As co-founder of Equipping Hearts with his wife Maritza Khouri, his ministry is to se



Online Follow-up and More Info

<https://lifemodelworks.org/>

